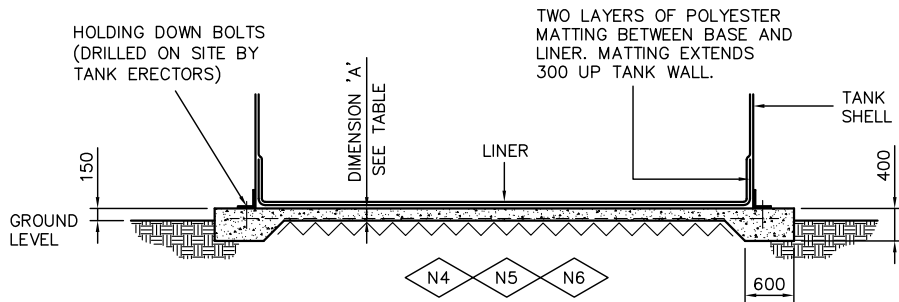
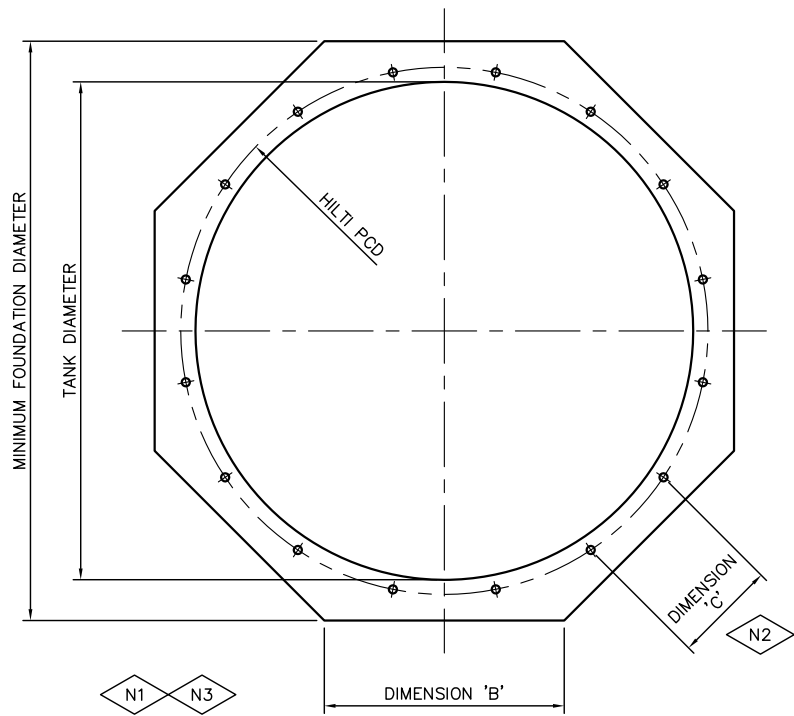


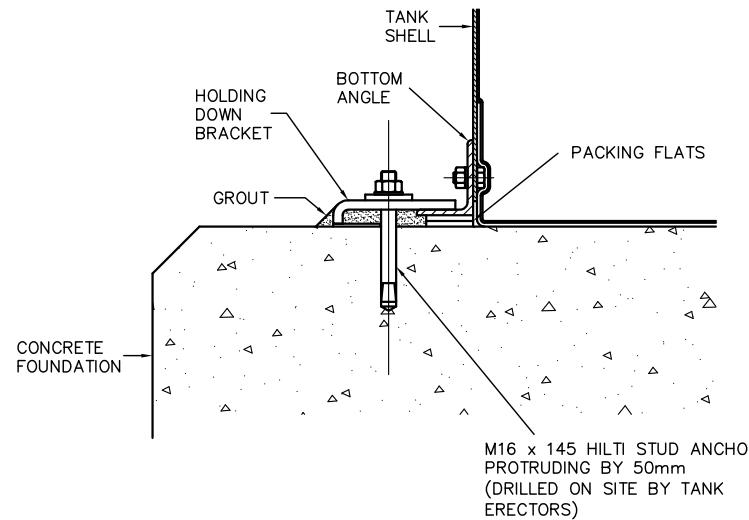
FH1170/01



SECTION THROUGH FOUNDATION



PLAN VIEW



TYPICAL HOLDING DOWN BOLT DETAIL

TANK DIA (m)	FOUND DIA (m)	SIDES	HILTI PCD (m)	HILTI'S	MESH SPEC	DIM A (m)	DIM B (m)	DIM C (m)
3.060	3.760	4	3.240	8	A142	0.127	3.760	1.240
3.820	4.520	6	4.000	10	A142	0.127	2.610	1.236
4.580	5.280	6	4.760	12	A142	0.127	3.048	1.232
5.350	6.050	8	5.530	14	A142	0.127	2.506	1.230
6.110	6.810	8	6.290	16	A142	0.127	2.820	1.227
6.880	7.580	10	7.060	18	A142	0.127	2.460	1.224
7.640	8.340	10	7.820	20	A142	0.127	2.710	1.223
8.400	9.100	12	8.580	22	A142	0.127	2.438	1.221
9.170	9.870	12	9.350	24	A193	0.152	2.645	1.220
9.930	10.630	14	10.110	26	A193	0.152	2.427	1.218
10.700	11.400	14	10.880	28	A193	0.152	2.600	1.217
11.460	12.160	16	11.640	30	A193	0.152	2.419	1.217
12.220	12.920	18	12.400	32	A193	0.152	2.570	1.216
12.990	13.690	18	13.170	34	A193	0.152	2.414	1.215
13.750	14.450	18	13.930	36	A193	0.152	2.548	1.214
14.510	15.210	20	14.690	38	A193	0.152	2.409	1.213
15.280	15.980	20	15.460	40	A193	0.152	2.530	1.213
16.040	16.740	22	16.220	42	A193	0.152	2.407	1.213
16.810	17.510	22	16.990	44	A193	0.152	2.518	1.212
17.570	18.270	22	17.750	46	A193	0.152	2.627	1.212
18.330	19.030	24	18.510	48	A193	0.152	2.505	1.211
19.100	19.800	24	19.280	50	A193	0.152	2.607	1.211
19.860	20.560	26	20.040	52	A193	0.152	2.496	1.210
20.630	21.330	26	20.810	54	A193	0.152	2.590	1.211
21.390	22.090	28	21.570	56	A193	0.152	2.489	1.210

NOTES

N1 THE FOUNDATION IS REQUIRED TO BE LEVEL TO $\pm 6\text{mm}$ WITH A SMOOTH FLOATED FINISH.

N2 HILTI PCD TOLERANCE $\pm 10\text{mm}$. HILTI SPEC TOLERANCE $\pm 75\text{mm}$.

N3 THE NUMBER OF SIDES MAY VARY FOR THE EASE OF SHUTTERING AND ECONOMY. IT MAY ALSO BE ALTERED TO SUIT SITE CONDITIONS.

N4 CONCRETE TO BE IN ACCORDANCE WITH BS 8110.

N5 HARDCORE TO BE COMPACTED IN 150mm TO 200mm THICK LAYERS TO APPROXIMATELY 97% PROCTOR THICKNESS TO SUIT SITE CONDITIONS.

N6 REINFORCING MESH IN ACCORDANCE WITH SPECIFICATION. SEE TABLE.

N7 OUR FOUNDATION DRAWING IS GIVEN FOR GUIDANCE ONLY AND THE FINAL DESIGN OF YOUR FOUNDATIONS WILL BE SUBJECT TO YOUR ACTUAL SITE CONDITIONS AND REQUIREMENTS.

E	Date:	By:	F	Date:	By:
---	-------	-----	---	-------	-----

C	REDRAWN. REDUCED TO A2.	D	
	Date: 20/11/07 By: SJG		Date: By:

A	REDRAWN.	B	HOLDING DOWN BOLT DETAIL AMMENDED
WRP	Date: 20/2/90 By: EGT		Date: 5/3/99 By: JN
	Material:		Finish:

Projection: THIRD ANGLE

Dimensions: ALL DIMENSIONS IN MM UNLESS OTHERWISE STATED

Notes: Please do not scale off this drawing. If in doubt ask. This drawing is the property and copyright of Franklin Hodge Industries and it is issued on condition that it is not copied or reproduced in full or in part or used for the carrying out of any works beyond the works to which the drawing applies.

Client:

Project: LIQUISTORE

Title: FOUNDATION DETAILS FOR LIQUISTORE WITHOUT A SUMP

Franklin HODGE
 Franklin Hodge Industries Limited
 Faraday Road, Hereford, HR4 9NS, UK.
 Tel: +44 (0)1432 269605 Web: www.franklinhodge.com
 Fax: +44 (0)1432 277454 Email: sales@franklinhodge.com

Part/Ref No:	FH1170/01	Drg No:	FH1170/01
Revision:	A2	Drawn:	EGT
Scale:	NTS	Date:	19/2/90
Checked:	WRH		